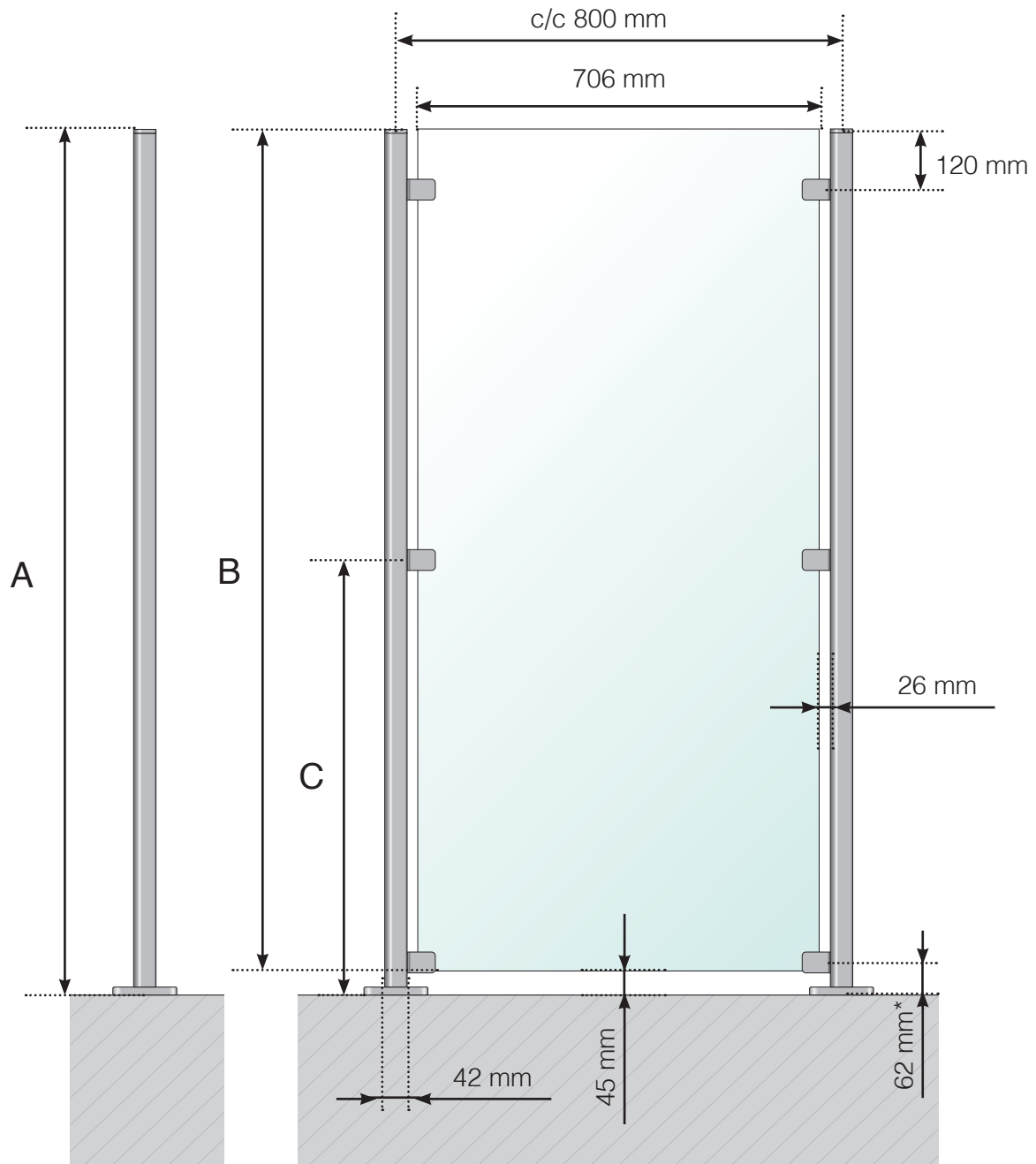


DETAILED MEASUREMENTS

WIND PROTECTION: STAINLESS STEEL WITH FOOT

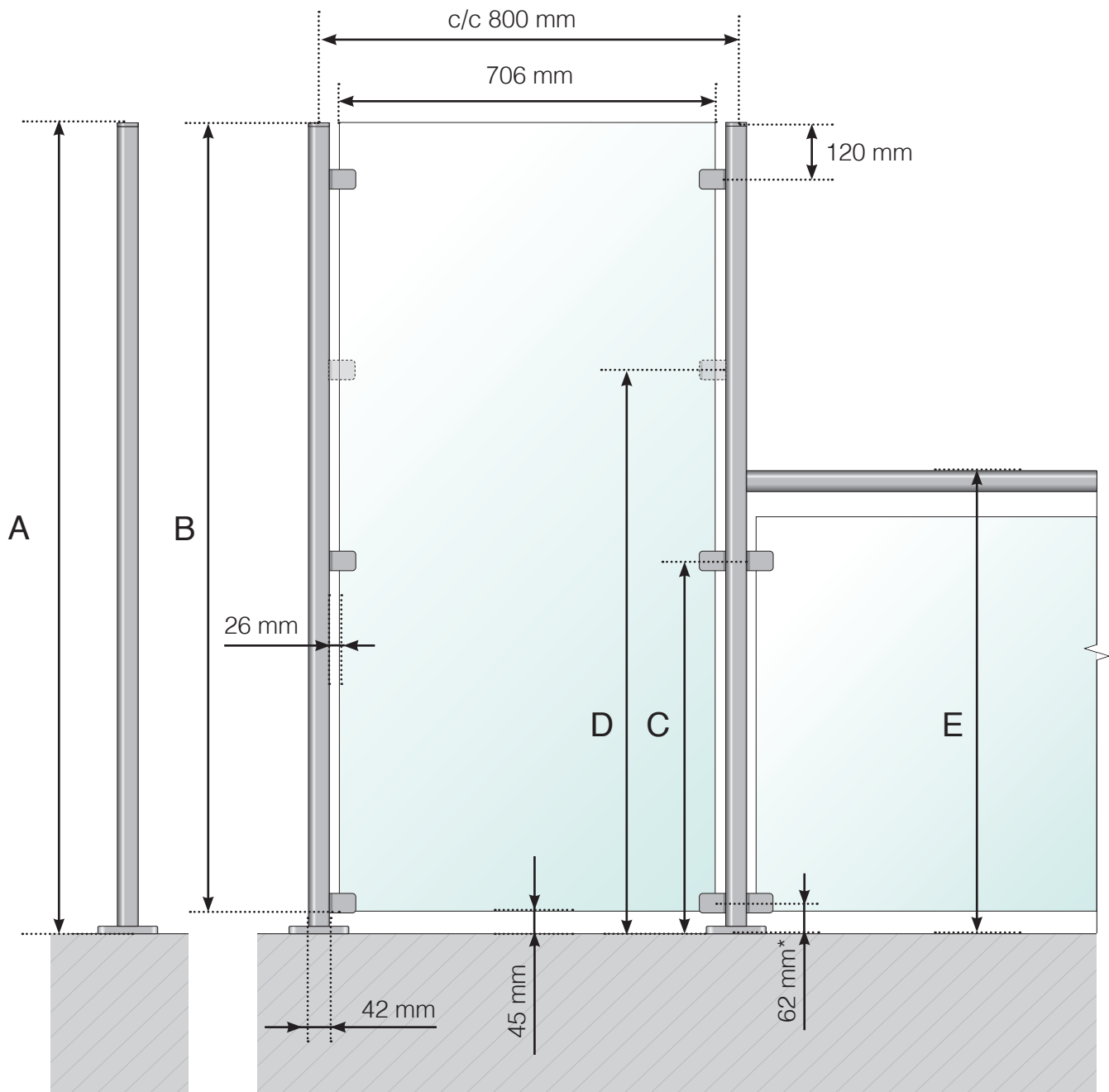


- A - Wind protection total height
- B - Glass height
- C - Clamp height from the floor surface

* Optional clamp mount with fall protection for glass

DETAILED MEASUREMENTS

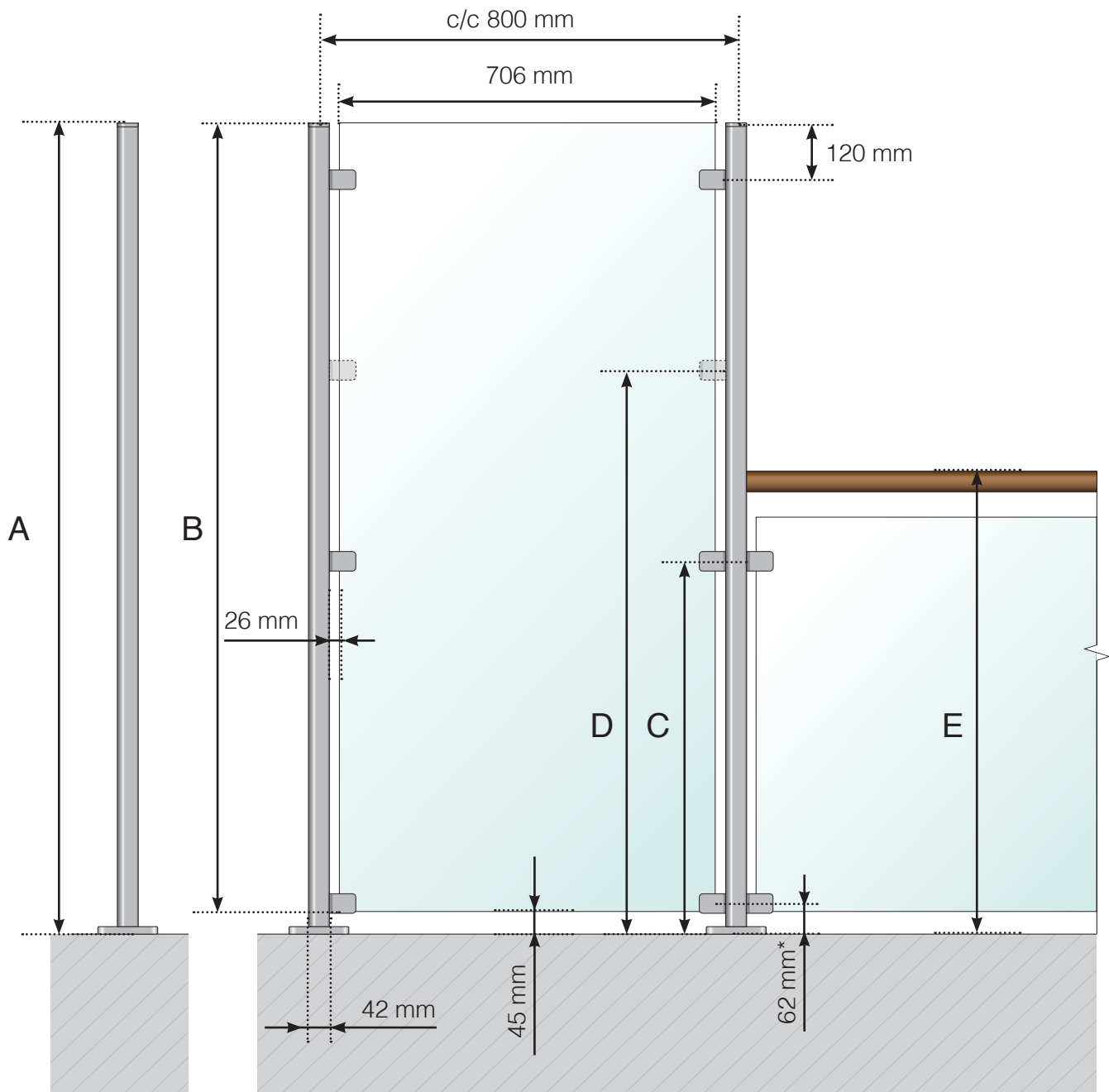
WIND PROTECTION: STAINLESS STEEL WITH FOOT
RAILING EXTENSION WITH STAINLESS STEEL CROSSBAR



- A - Wind protection total height
- B - Glass height
- C - Total height of clamp from the floor surface
- D - Extra clamp height from the floor surface. **Please note!** Only when extending an 800 or 900 mm high railing.
- E - Total railing extension height

DETAILED MEASUREMENTS

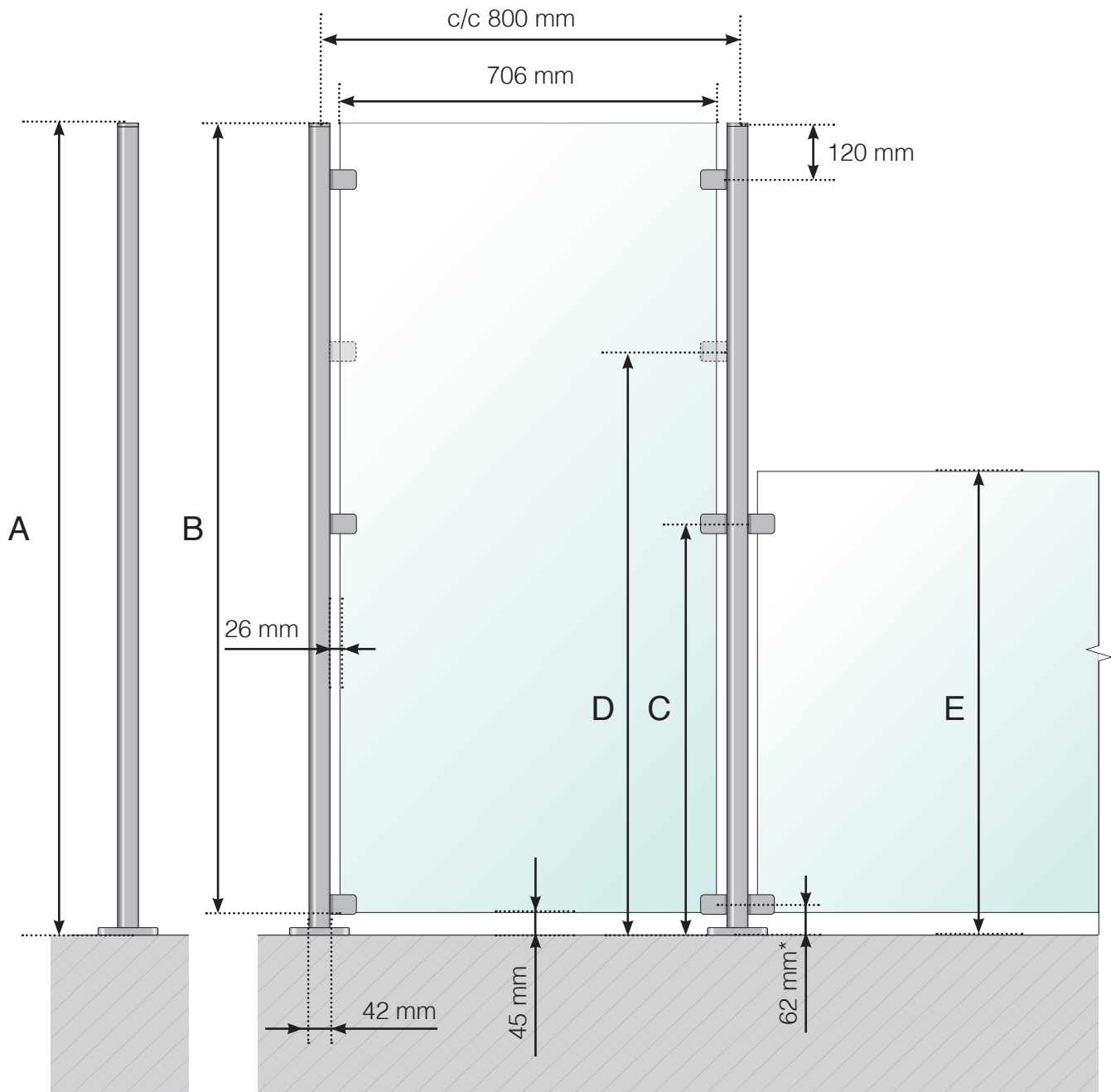
WIND PROTECTION: STAINLESS STEEL WITH FOOT
RAILING EXTENSION WITH WOODEN CROSSBAR



- A - Wind protection total height
- B - Glass height
- C - Total height of clamp from the floor surface
- D - Extra clamp height from the floor surface. **Please note!** Only when extending an 800 or 900 mm high railing.
- E - Total railing extension height

DETAILED MEASUREMENTS

WIND PROTECTION: STAINLESS STEEL WITH FOOT RAILING EXTENSION WITHOUT CROSSBAR



- A - Wind protection total height
- B - Glass height
- C - Total height of clamp from the floor surface
- D - Extra clamp height from the floor surface. **Please note!** Only when extending an 800 or 900 mm high railing.
- E - Extension railing total height